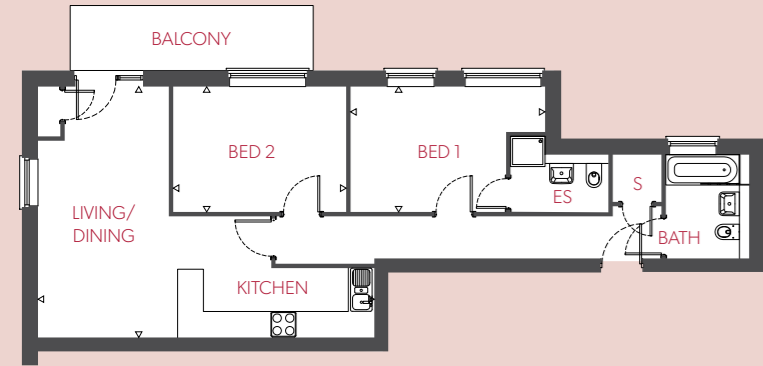


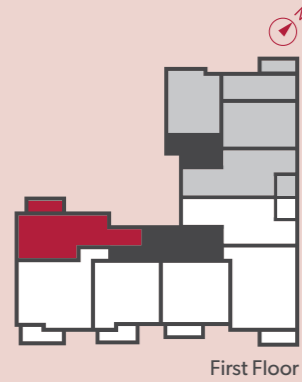
Normill Court Apartments



Apartment 6

2 Bedroom
72.14m² / 776ft²

S= Store ES=Ensuite



First Floor

Kitchen/Living/Dining	7.77m x 5.80m	25' 6" x 19' 0"
Bedroom 1	4.50m x 2.90m	14' 9" x 9' 6"
Bedroom 2	4.00m x 2.90m	13' 1" x 9' 6"

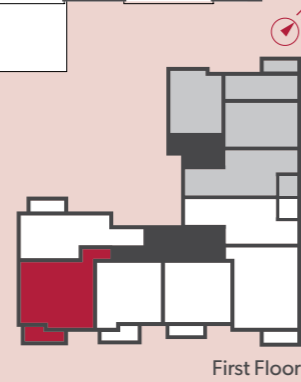
Affordable Rent
 Communal Areas



Apartment 7

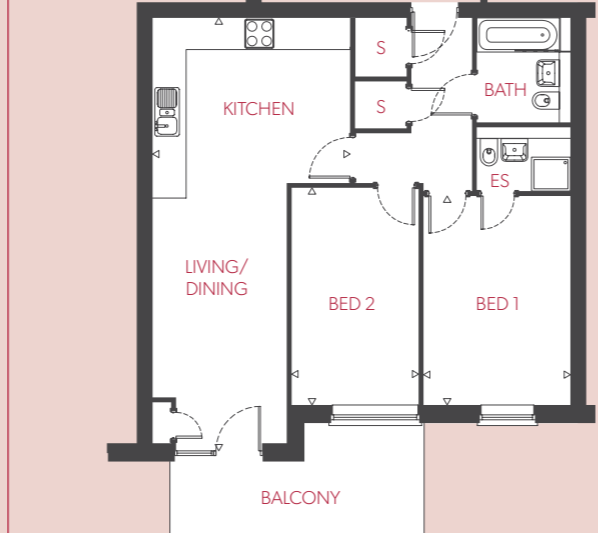
2 Bedroom
86.88m² / 935ft²

S= Store ES=Ensuite



First Floor

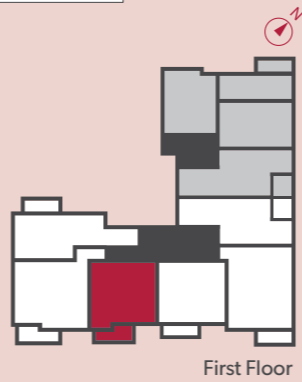
Kitchen/ Living/Dining	5.14m x 7.96m	16' 11" x 26' 2"
Bedroom 1	3.35m x 5.42m	11' 0" x 17' 9"
Bedroom 2	2.61m x 5.42m	8' 7" x 17' 9"



Apartment 8

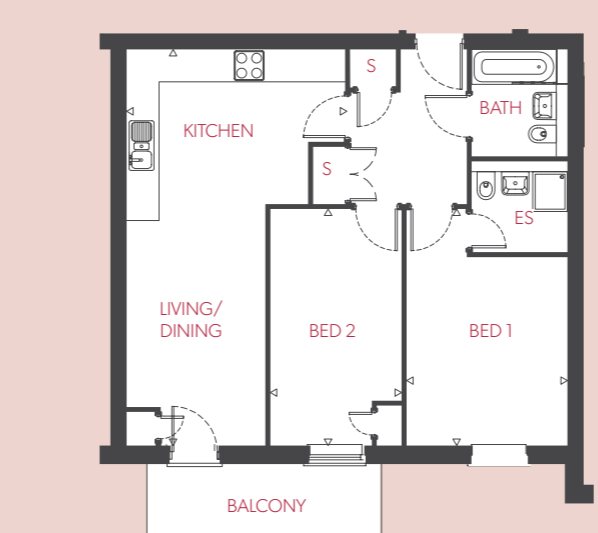
2 Bedroom
70.71m² / 761ft²

S= Store ES=Ensuite



First Floor

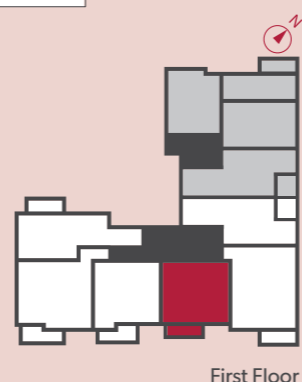
Kitchen/Living/Dining	4.06m x 8.90m	13' 4" x 29' 3"
Bedroom 1	3.02m x 4.30m	9' 11" x 14' 1"
Bedroom 2	2.61m x 4.47m	8' 7" x 14' 8"



Apartment 9

2 Bedroom
70.61m² / 760ft²

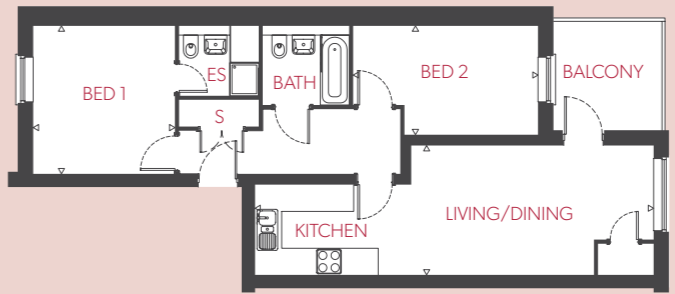
S= Store ES=Ensuite



First Floor

Kitchen/Living/Dining	4.42m x 7.96m	14' 6" x 26' 2"
Bedroom 1	3.23m x 4.75m	10' 7" x 15' 7"
Bedroom 2	2.64m x 4.75m	8' 8" x 15' 7"

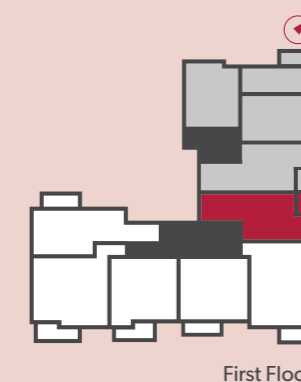
Affordable Rent
 Communal Areas



Apartment 11

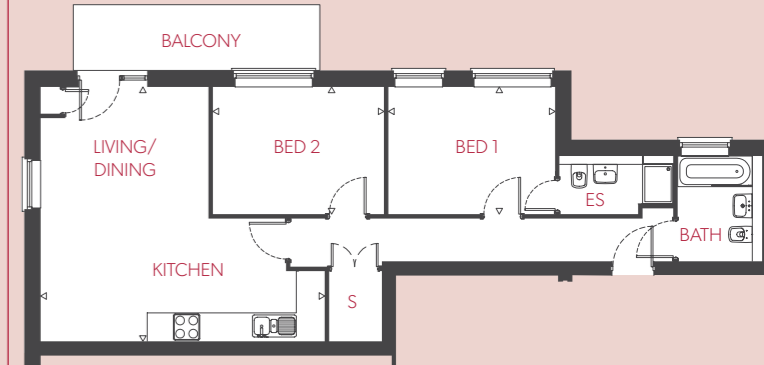
2 Bedroom
70.07m² / 754ft²

S= Store ES=Ensuite



First Floor

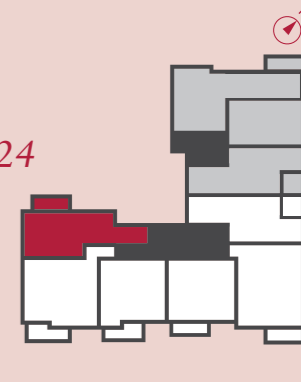
Kitchen/Living/Dining	9.70m x 3.15m	31' 10" x 10' 4"
Bedroom 1	3.45m x 3.60m	11' 4" x 11' 10"
Bedroom 2	4.50m x 2.64m	14' 9" x 8' 8"



Apartments 15, 24

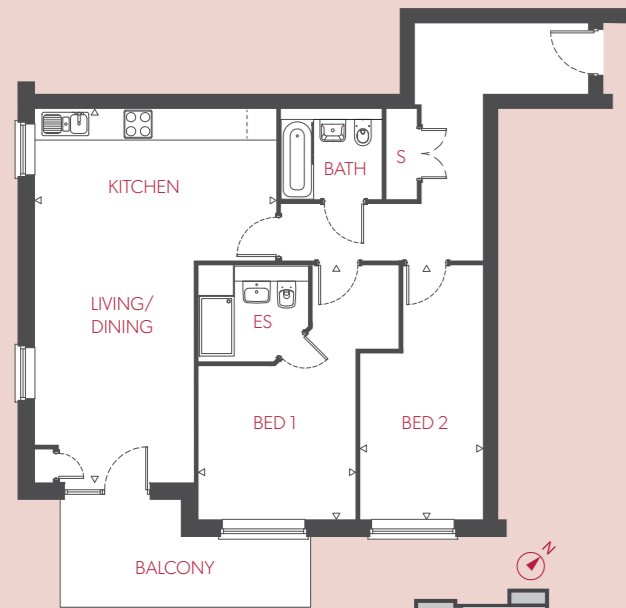
2 Bedroom
72.14m² / 776ft²

S= Store ES=Ensuite



24 - 3rd
15 - 2nd

Kitchen/Living/Dining	6.47m x 5.80m	21' 3" x 19' 0"
Bedroom 1	3.80m x 2.90m	12' 6" x 9' 6"
Bedroom 2	3.90m x 2.90m	12' 10" x 9' 6"



Apartments 16, 25

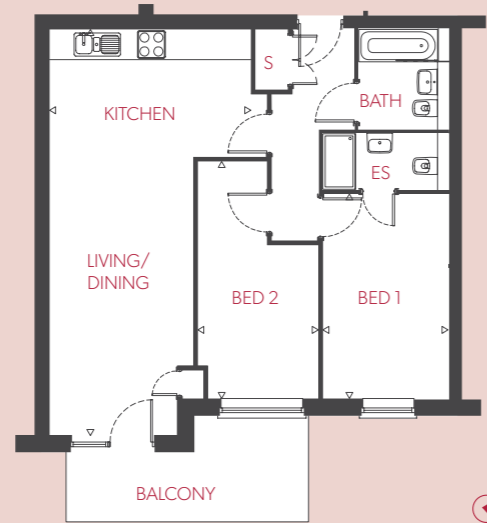
2 Bedroom
86.88m² / 935ft²

S= Store ES=Ensuite

25 - 3rd
16 - 2nd

Kitchen/ Living/Dining	4.95m x 7.96m	16' 3" x 26' 2"
Bedroom 1	3.35m x 5.51m	11' 0" x 18' 1"
Bedroom 2	2.61m x 5.51m	8' 7" x 18' 1"

Affordable Rent
 Communal Areas



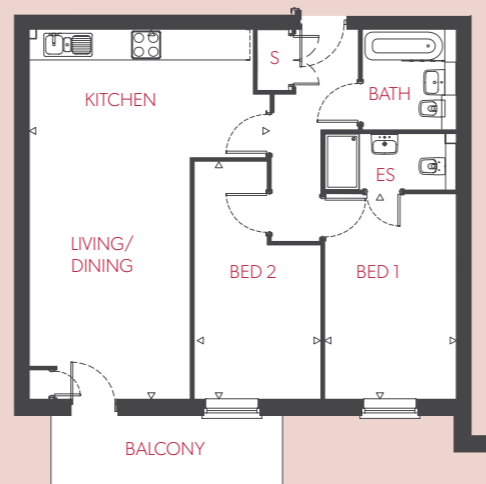
Apartment 17

2 Bedroom
70.71m² / 761ft²

S= Store ES=Ensuite

Second Floor

Kitchen/ Living/Dining	4.34m x 8.76m	14' 3" x 28' 9"
Bedroom 1	2.70m x 4.41m	8' 10" x 14' 6"
Bedroom 2	2.60m x 5.11m	8' 6" x 16' 9"



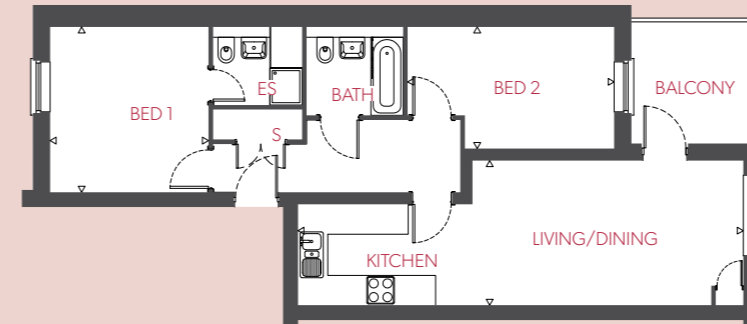
Apartment 18

2 Bedroom
70.61m² / 760ft²

S= Store ES=Ensuite

Second Floor

Kitchen/Living/Dining	4.95m x 7.96m	16' 3" x 26' 2"
Bedroom 1	2.70m x 4.41m	8' 10" x 14' 6"
Bedroom 2	2.60m x 5.11m	8' 6" x 16' 9"



Apartment 20

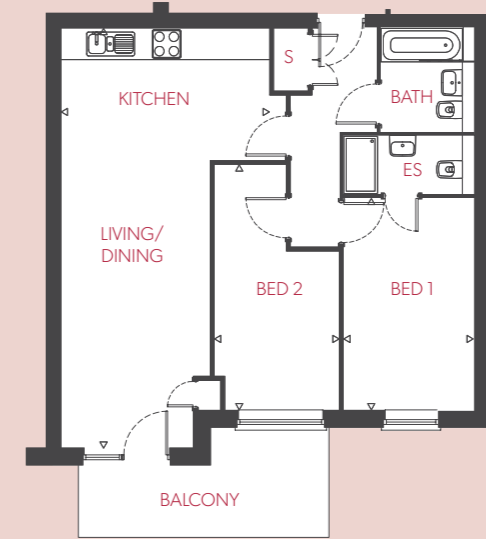
2 Bedroom
70.07m² / 754ft²

S= Store ES=Ensuite

Second Floor

Kitchen/Living/Dining	9.70m x 3.15m	31' 10" x 10' 4"
Bedroom 1	3.45m x 3.60m	11' 4" x 11' 10"
Bedroom 2	4.50m x 2.64m	14' 9" x 8' 8"

Affordable Rent
 Communal Areas



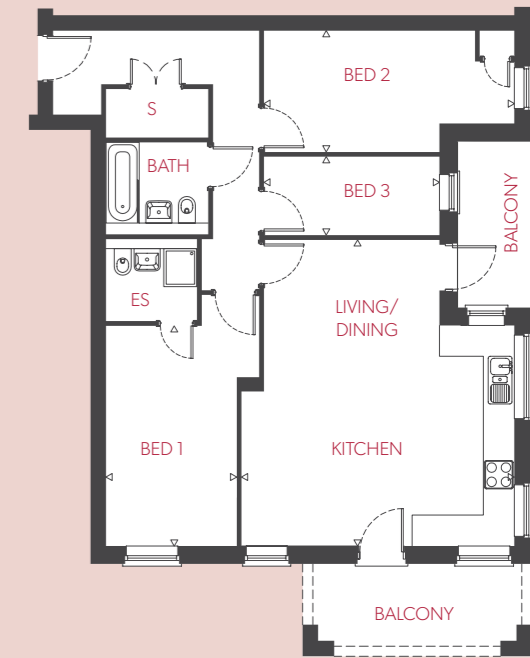
Apartment 26

2 Bedroom
70.71m² / 761ft²

S= Store ES=Ensuite

Third Floor

Kitchen/ Living/Dining	4.34m x 8.76m	14' 3" x 28' 9"
Bedroom 1	2.70m x 4.41m	8' 10" x 14' 6"
Bedroom 2	2.60m x 5.11m	8' 6" x 16' 9"



Apartments 10, 19

3 Bedroom
88.36m² / 951ft²

S= Store ES=Ensuite

19 - 2nd
10 - 1st

Kitchen/Living/Dining	5.73m x 6.44m	18' 10" x 21' 2"
Bedroom 1	2.75m x 4.63m	9' 0" x 15' 2"
Bedroom 2	5.26m x 2.55m	17' 3" x 8' 4"
Bedroom 3	3.69m x 1.65m	12' 1" x 5' 5"



www.witleywharf.co.uk
witleysales@octavia.org.uk
020 8962 3501

These brief particulars have been prepared and are intended as a guide to supplement an inspection or survey and do not form part of any offer or contract. Their accuracy is not guaranteed. They contain statements of opinion and in some instances we have relied on information supplied by others. The images and photographs contained in this brochure are not all of this development. This brochure includes photographs of the surrounding area for illustrative purposes only. Design elements and specification details may change without further notice. You should verify the particulars on your visit to the site and the particulars do not obviate the need for a survey and all the appropriate enquiries. Accordingly, there shall be no liability as a result of any error or omission in the particulars or any information given. All information correct at time of print – February 2019.